

**Main Characteristics**

Cartridge Sub-miniature fuse; Quick- Acting(F) Standard

UL-248-14

**Materials**

- Tube: Ceramic Tube
- End Caps: Nickel plated brass
- Axial Leads: Nickel plated caps
- Tin plated copper wires

**Operating Temperature**

-55°C to +125°C

**Storage Conditions**

- +10°C to +60°C
- Relative humidity: ≤75% yearly average
- Without dew, maximum 30 days at 95%

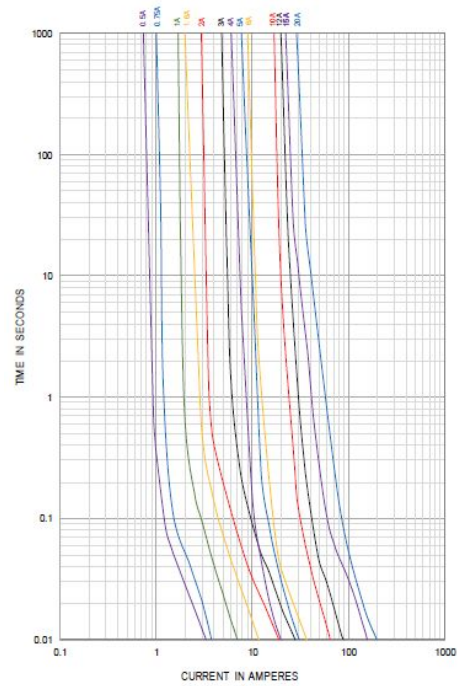
**Vibration Resistance**

- 24 cycles at 15 min. each (60068-6)
- 10-60Hz at 0.75mm amplitude
- 60-2000Hz at 10g acceleration

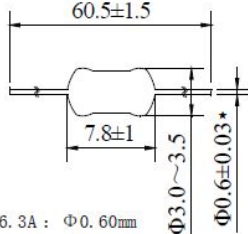
**Soldering Parameters**

- 260°C. ≤5 sec (Wave Soldering)
- 350°C. ≤3 sec (Hand Soldering)
- Soldering Peak: 260°C. 10 sec. (IEC 60068-20)

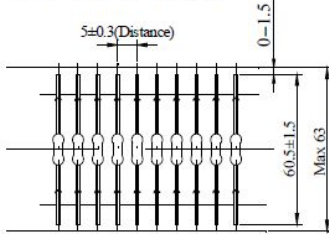
Average Time Current(I-T Curve)



Dimensions (unit: mm)



★:  
100mA~6.3A : Φ0.60mm  
8.0A~20.0A : Φ0.80mm



Rated Current	100%	200%
100mA~20A	>4h	<60s



Amp Code	Rated Current	Max. Voltage	Nominal Melting I <sup>2</sup> t (A <sup>2</sup> sec)	Breaking Capacity	Approvals		
					cULus	cURus	TUV
0100	100mA	250V AC	0.0191	50A@250V AC 50A@125V AC	●	○	○
0125	125mA		●		○	○	
0160	160mA		●		○	○	
0200	200mA		●		○	○	
0250	250mA		●		○	●	
0315	315mA		●		○	●	
0400	400mA		●		○	●	
0500	500mA		●		○	●	
0630	630mA		●		○	●	
0800	800mA		●		○	●	
1100	1.00A		●		○	●	
1125	1.25A		●		○	●	
1160	1.60A		●		○	●	
1200	2.00A		●		○	●	
1250	2.50A		●		○	●	
1315	3.15A		○		●	●	
1400	4.00A	○	●	●			
1500	5.00A	○	●	○			
1600	6.00A	○	●	○			
1630	6.30A	○	●	○			
1800	8.00A	○	●	○			
2100	10.00A	○	●	○			
2120	12.00A	32V AC	78.32	50A@32V AC 100A@16V AC	○	●	○
2150	15.00A		249.6		○	●	○
2160	16.00A		255		○	●	○
2200	20.00A		392		○	●	○

**Note:** (1) Permissible continuous operating current is 100% at ambient temperature of 23°C (73.4°F)  
 (2) The cURus and cULus certification for 100mA~10A only by 125V and 250V AC, for 12A~16A only by 16V and 32V AC;  
 the TUV certification only by 250V AC. (3)The current values used for calculating I<sup>2</sup>T should be within the standard range of 8ms ~ 10ms.